

## Steca Solarix PLI

Software updates for the Steca Solarix PLI



# About this manual

## Purpose

This manual describes the software update process of this unit (also referred to as “inverter” throughout this manual or “PLI 5000-48” for the Solarix PLI 5000-48, “PLI 2400-24” for the Solarix PLI 2400-24, or “PLI 1000-12” for the Solarix PLI 1000-12 models). Please read this manual carefully before initiating the update process.

This manual will at times refer to the product manual of the above inverters. You can find the latest version of the product manual at [www.steca.com](http://www.steca.com).

## Scope

This manual applies to the following products:

- Steca Solarix PLI 1000-12
- Steca Solarix PLI 2400-24
- Steca Solarix PLI 5000-48
- Steca Solarix PLI 5000-48 Rev 2

# Updating the Steca Solarix PLI software

## Preparation

Follow the steps below to update your Steca Solarix PLI unit

- Make sure your inverter is up and running
- It should be connected to DC power or the battery.
- The battery voltage must be higher than the programmed start up voltage (default: >46V for PLI 5000 models).
- Connect the inverter to a computer using the RS232 communication cable



Note: Depending on your computer model, additional adapters (not included) may be required

- Ensure all communication software using the COM port (RS 232-port) is closed (e.g. possible monitoring software). This can also include some UPS monitoring software.

## Setup

To start the software update open the file "ReflashTool\_SolarixPLI.exe".

You will be presented with the menu displayed in Figure 1. Make sure you select the correct COM port in the "Serial" setting / correlating drop-down list.

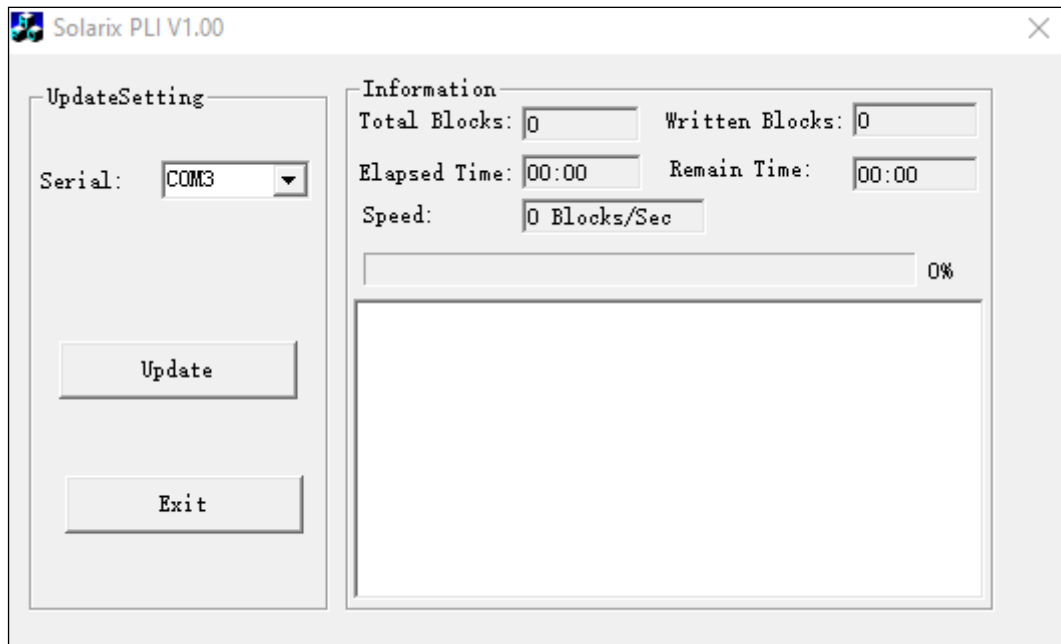


Figure 1 - reflash tool, main menu

Once you have selected your COM port, clicking "Update" will start the update process. There will be a pop-up window requiring you to confirm your choice. Press "Yes" or "Ja" (depending on localisation settings) to proceed, selecting "No" or "Nein" will cancel the process.

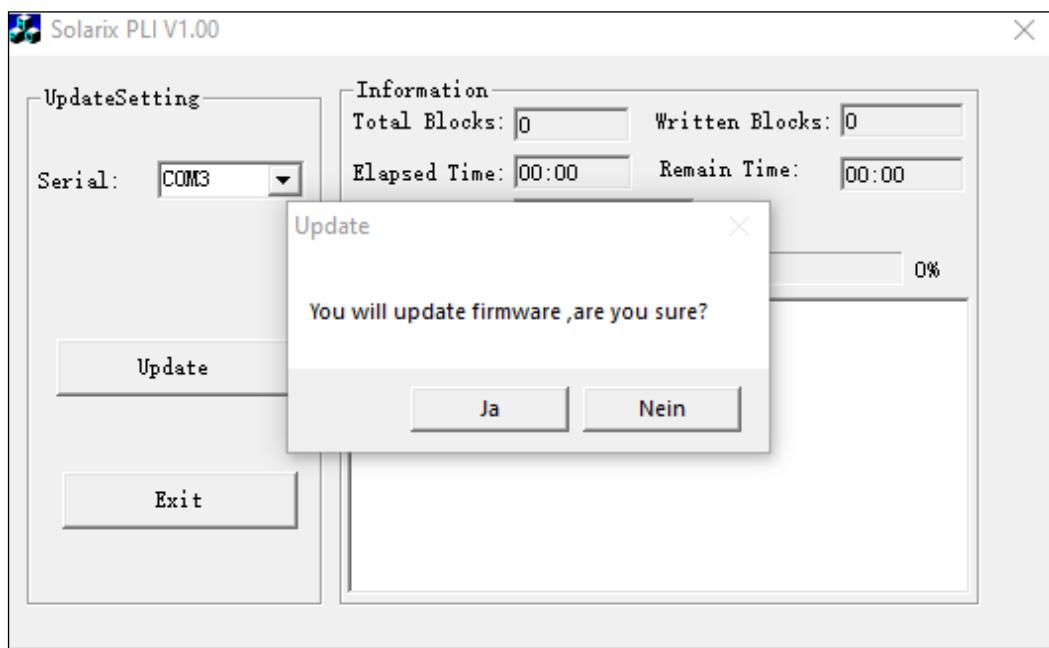


Figure 2 - update prompt

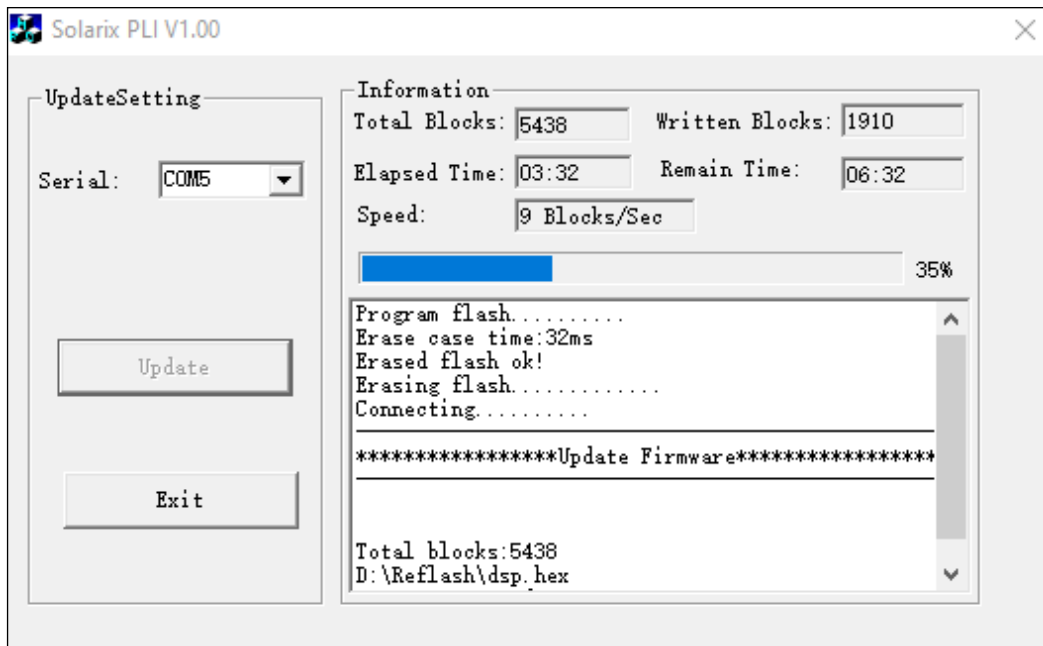


Figure 3 - update process

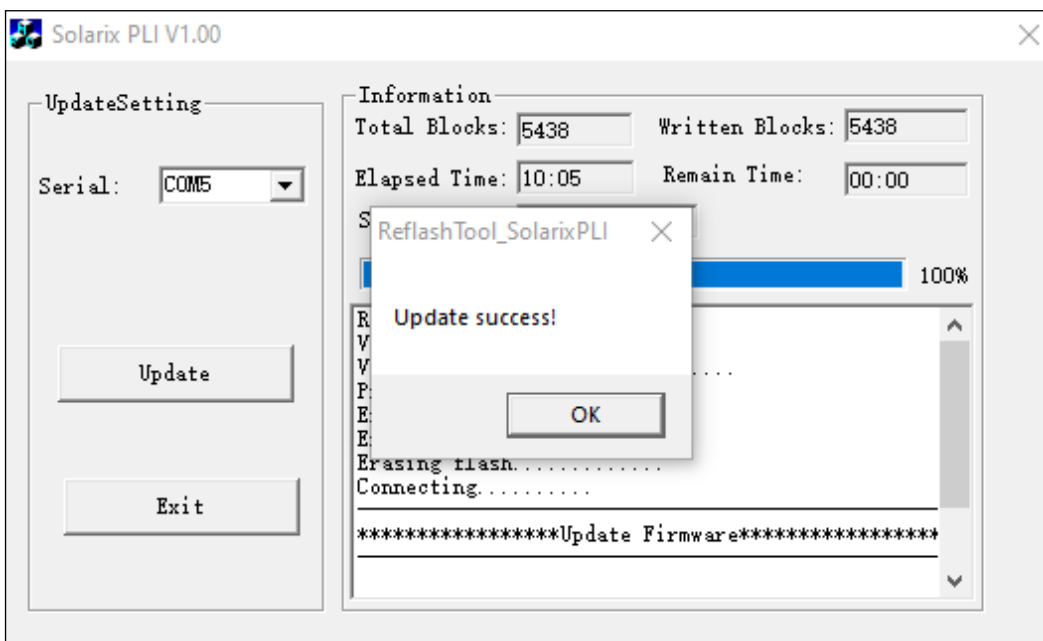


Figure 4 – successful update



**Warning: The update will require some time to complete. Do not remove the connection cable while the update is running. This will irrevocably damage the inverter.**

The update will run and complete without requiring further user input. This process can take several minutes. Please do not remove the connection cable while the update is still running. This will irrevocably damage the inverter. Once the update is finished, you will receive a pop-up - as is displayed in Figure 4. Once you receive this notification you can close the reflash-tool.

Please restart the inverter after the software update.

## Software settings and parameters

After updating your firmware it is advisable to restore all parameters to their default settings.

This can be achieved either directly via the display / inverter or via separate monitoring software like WatchPower.

When using the direct input option, please adhere to the product manual in regard to the program settings. When you are using WatchPower you can reset the the inverter to its default settings as is displayed in Figure 5 and Figure 6. The former overview also displays your current software and can be used to validate whether the previous update process was a success.

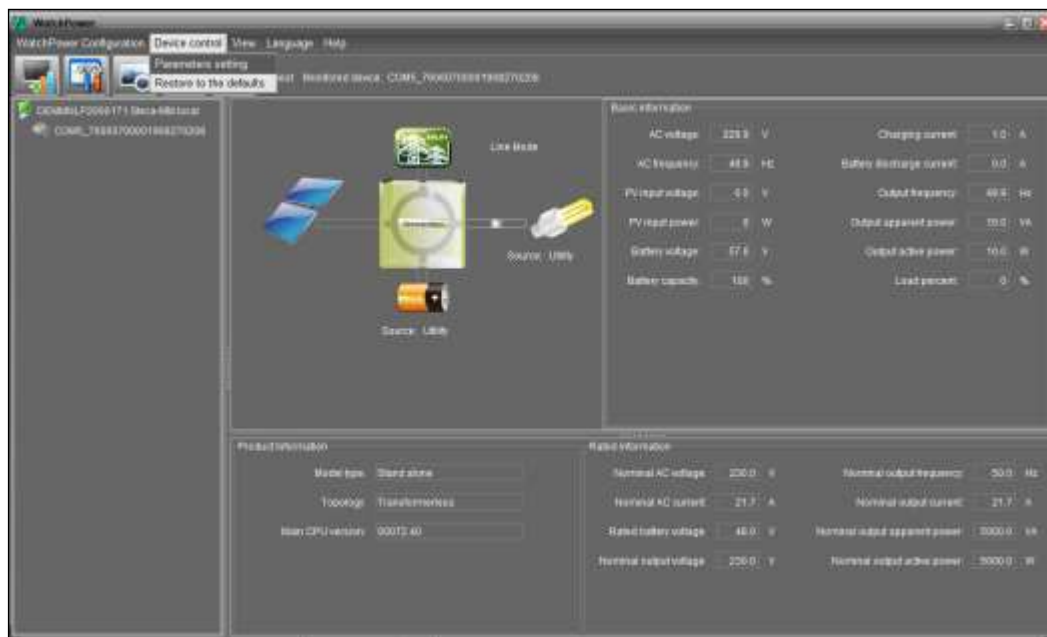


Figure 5 – device control

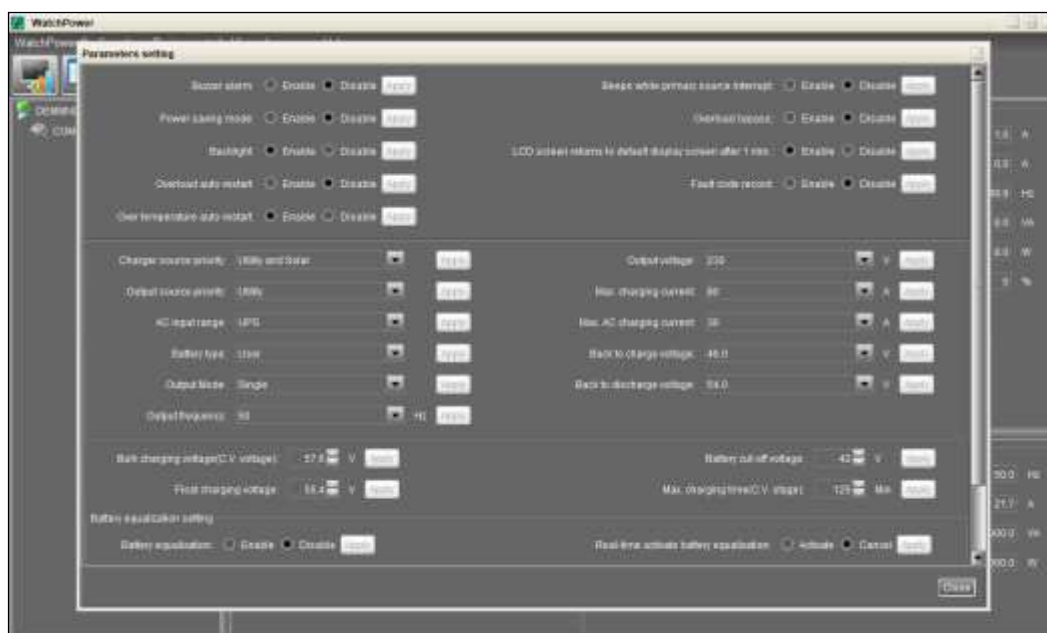


Figure 6 – parameter settings

---

## Guarantee Conditions

Conditions are available on the Internet at:

[https://www.steca.com/index.php?5\\_Jahre\\_Garantie5ea97a3a7b893](https://www.steca.com/index.php?5_Jahre_Garantie5ea97a3a7b893)

## Exclusion of Liability

The manufacturer can neither monitor the compliance with this manual nor the conditions and methods during the installation, operation, usage and maintenance of the controller. Improper installation of the system may result in damage to property and, as a result, to bodily injury.

Therefore, the manufacturer assumes no responsibility and liability for loss, damage or costs which result from or are in any way related to incorrect installation, improper operation, incorrect execution of installation work and incorrect usage and maintenance.

Similarly, we assume no responsibility for patent right or other right infringements of third parties caused by usage of this controller. The manufacturer reserves the right to make changes to the product, technical data or installation and operating instructions without prior notice.

## Contact

In the case of complaints or faults, please contact the local dealer from whom you purchased the product. They will help you with any issues you may have.

KATEK Memmingen GmbH  
Mammostrasse 1  
87700 Memmingen  
Germany

E-mail [service@stecasolar.com](mailto:service@stecasolar.com)  
Internet [www.steca.com](http://www.steca.com)